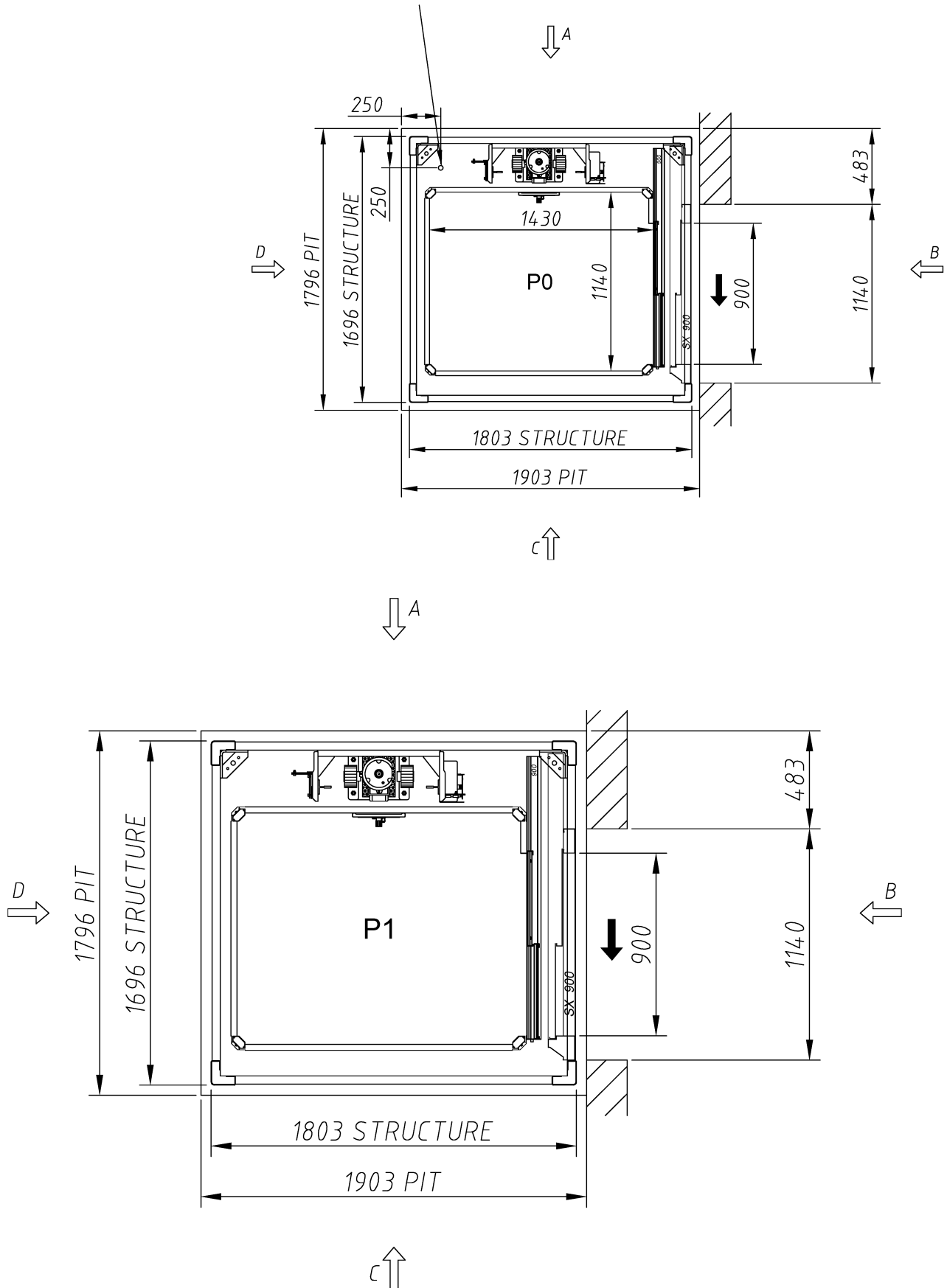


<szyb samonosny, drzwi automatyczne teleskopowe>

CONNECTION POINTS FOR EL. CABLES
COMING FROM THE MAIN SWITCH



Data _____

Firma _____

WINDPOLDZWIG SP. Z.O.O.

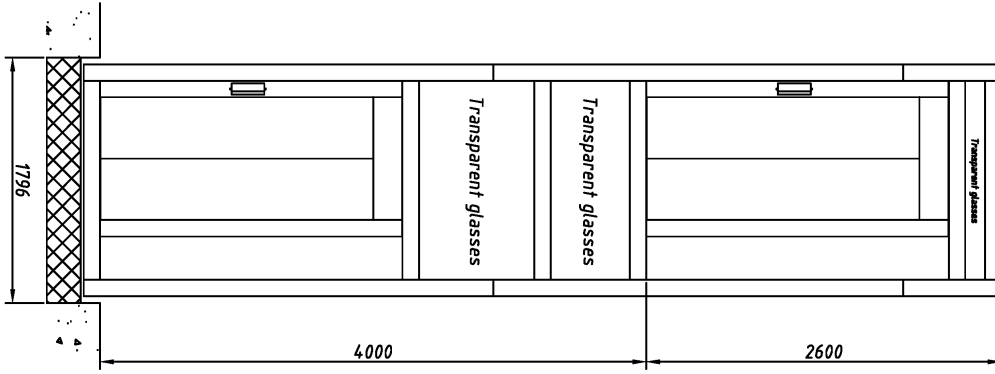
vimec

Platforma pionowa o napędzie elektrycznym pasowym - typ Vimec E10 (Eco Vimec)

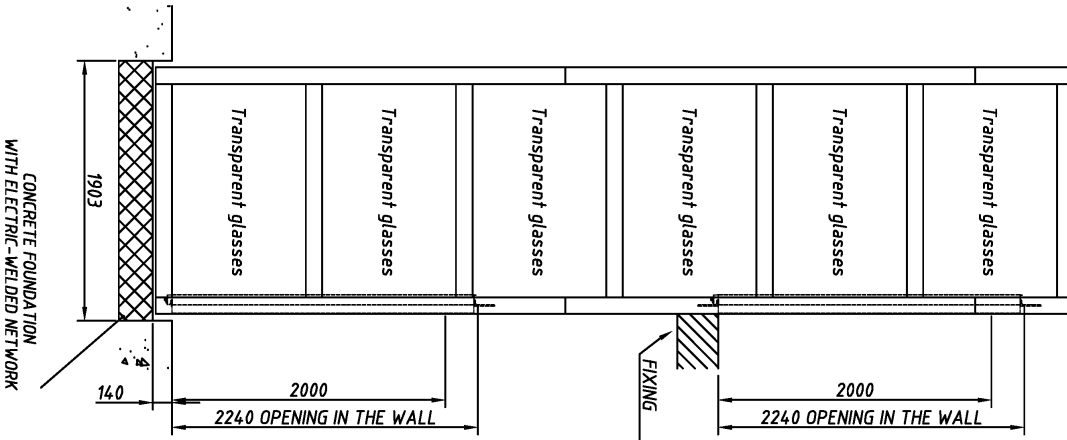
<szyb samonosny, drzwi automatyczne teleskopowe>

In respect of the Annex XXIII of the Regulations (UE) 833/2014, concerning restrictive measures in consideration of Russia's actions that destabilize the situation in Ukraine and subsequent amendments, which lists the products for which export to Russia is prohibited, the export to Russia and Belarus of this model is forbidden

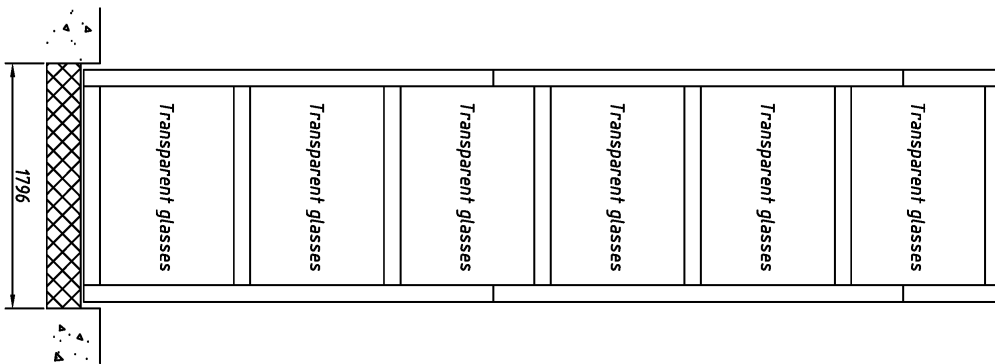
VIEW FROM B



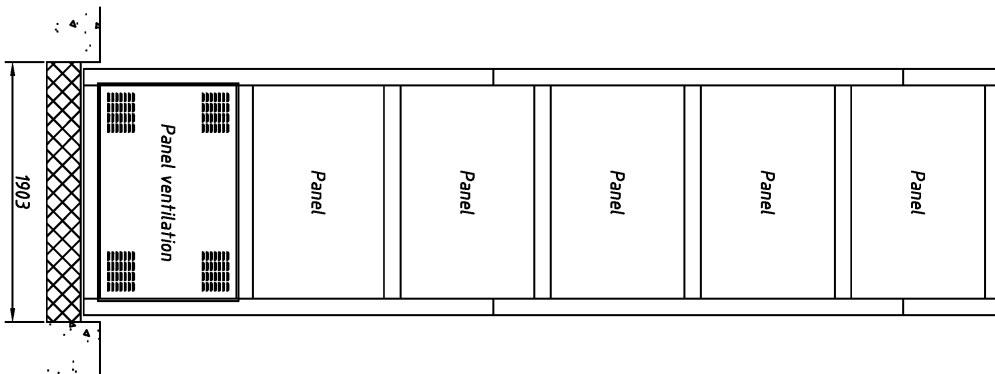
VIEW FROM C



VIEW FROM D



VIEW FROM A

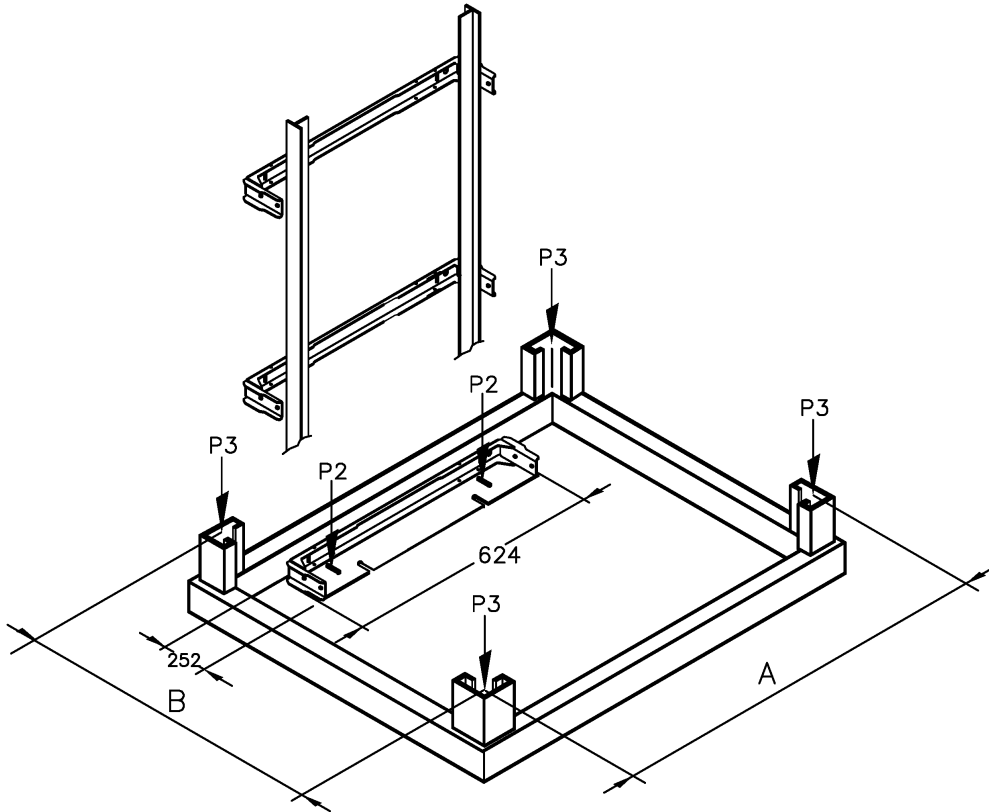


VERTICAL PLATFORM LIFT Mod. E10

CLIENT: WINDPOLDZWIG SP. Z.O.O.

ORDER: AAC240

LOADS ON THE BASE PLATE



PROJECT DATA

Load capacity =	400	kg	A =	1657.5	mm
Platform width =	1460	mm	B =	1551	mm
Platform depth =	1170	mm			
Travel =	4000	mm			

"P2" IS THE MAXIMUM LOAD WITH THE SAFETY GEAR IN ACTION ON THE RAIL
THE LOAD IS DISTRIBUTED ON THE BASE PLATE (624x252)

$$P2 = 1620 \text{ Kg}$$

"P3" SELF SUPPORTING STRUCTURE LOADS WITH GLASS LIFT SHAFTS ON THE FOUR SIDES OF THE STRUCTURE

$$P3 = 1242 \text{ Kg}$$

Norm: SR – Führungsschiene

DATE 01/11/2024