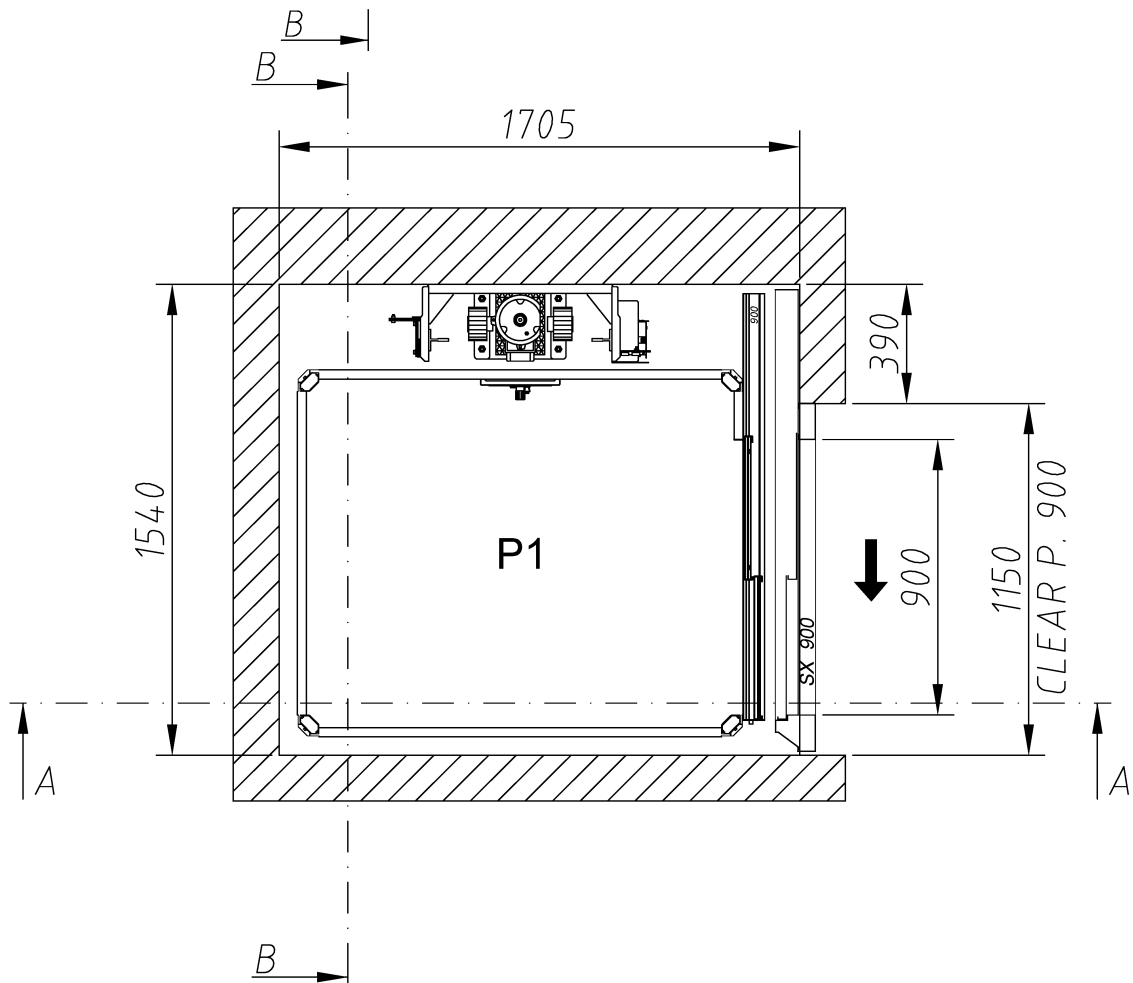
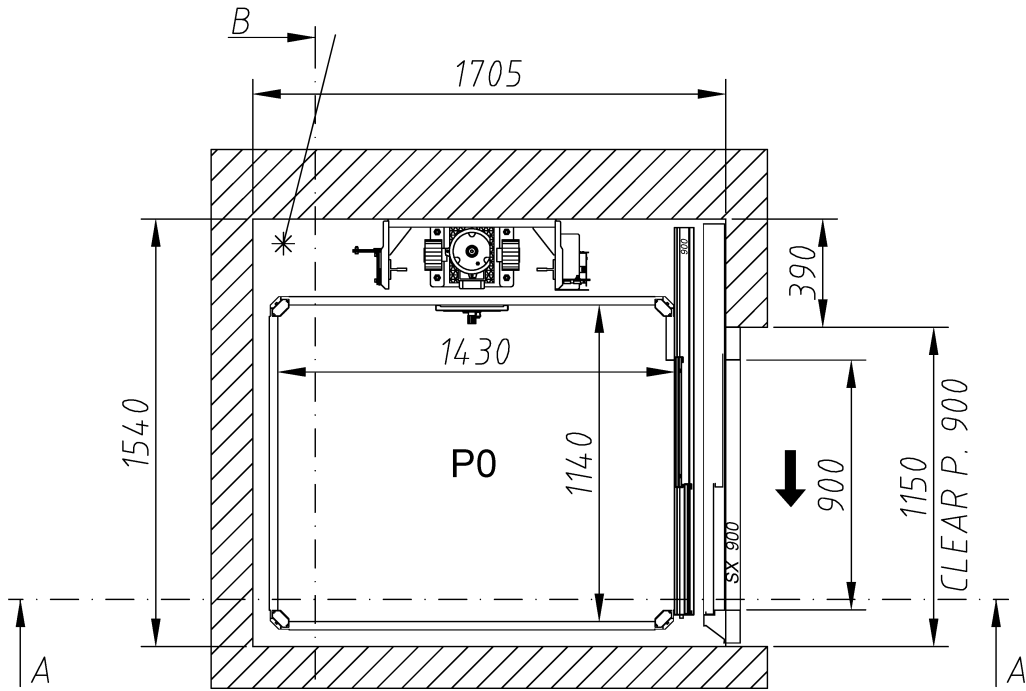


<szyb murowany, drzwi automatyczne teleskopowe>

CONNECTION POINTS FOR EL.  
CABLES COMING FROM THE MAIN SWITCH



Data \_\_\_\_\_

Firma \_\_\_\_\_

WINDPOLDZWIG SP. Z.O.O.

vimec

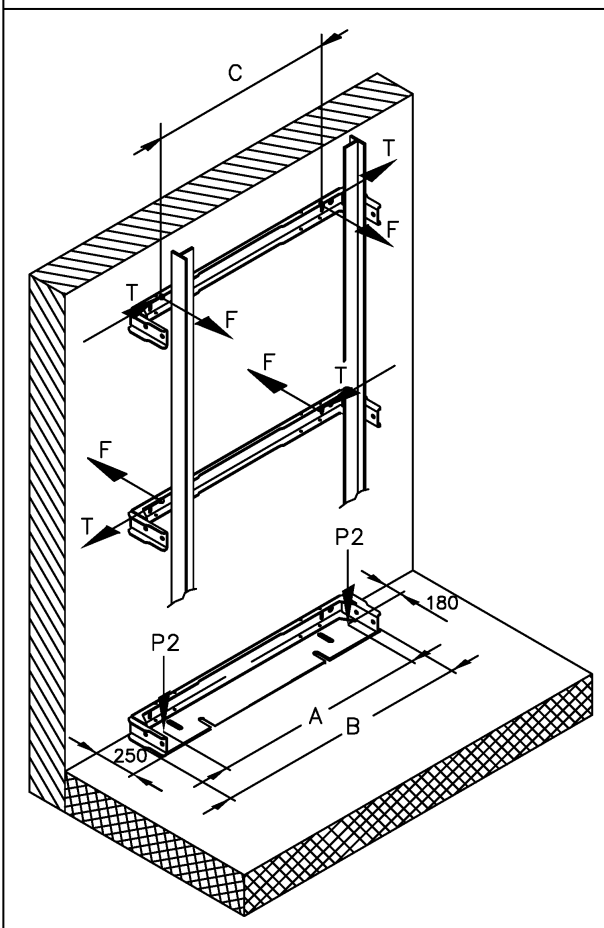


## PLATFORM LIFT – E10

CLIENT: WINDPOLDZWIG SP. Z.O.O.

ORDER: AAC232

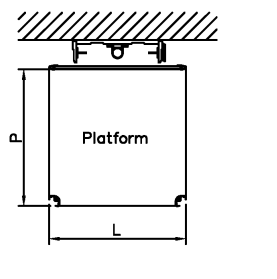
### LOAD ON THE BASEMENT & ON THE RAIL SUPPORT



### PROJECT DATA

Q =	400	kg
L =	1460	mm
P =	1170	mm
A =	550	mm
B =	640	mm
C =	500	mm
D =	4000	mm

Q = Load  
 L = Platform width  
 P = Platform depth  
 A = Distance between "P2" load  
 B = Base plate width  
 C = Distance between connection  
 D = Travel



### VERTICAL LOAD OF THE EQUIPMENT ON THE BASEMENT PLATE

Consider the maximum loads and Not the sum of the loads	P1 (kg)	P2 (kg)
WORKING POSITION	0	449
WITH SAFETY GEAR IN ACTION	0	1620

### HORIZONTAL LOAD OF THE EQUIPMENT ON THE RAIL FIXING

Centred Loaded	Maximum load decentralized on the platform	
	F(kg)	T(kg)

WORKING POSITION	209	191	45
WITH SAFETY GEAR IN ACTION	383	350	83

Norm: SR – Fuhrunsschiene

DATE 01/11/2024

Data \_\_\_\_\_

Firma \_\_\_\_\_

WINDPOLDZWIG SP. Z.O.O.

**vimec**